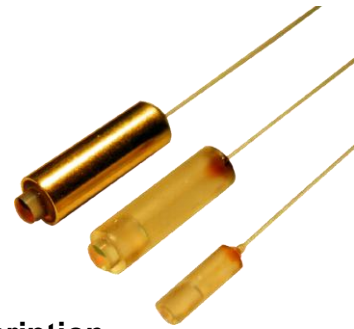


Feature

- Low Insertion Loss
- High Extinction Ratio
- High Return Loss
- Wide Operating Wavelength, Working Distance & Temperature Range
- Exceptional Reliability and Stability



Applications

- Fiber Optics Components and Modules
- Free-space Optics Integration
- Test & Measurement

Product Description

Primanex collimator can provide a low cost solution with excellent performances including high extinction ratio, low insertion loss, high return loss. In addition, Primanex can design various parameters by customer's requirement such as beam spot diameter, working distance, dimension etc.

Specifications

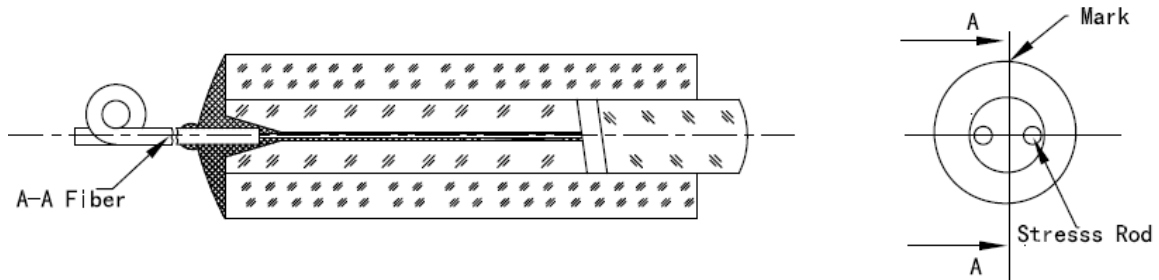
Item	Unit	Parameters	Note
Working Wavelength	nm	1310/1550	
Operating Band Width	nm	1260~1620	Wider operating band width available upon request
Lens Type	N/A	C-lens/G-lens	
Fiber Type	N/A	PANDA PM fiber	Customizable
Working Distance	mm	5.5 +/- 0.5 (Standard)	From lens surface to beam waist or Customizable
Insertion Loss	dB	0.20 (Typ.); 0.30 (Max.)	For a pair of collimators spaced at working distance
Extinction Ratio	dB	≥20	
Return Loss	dB	≥55	
Beam Spot Diameter	mm	0.35 (Typ.); 0.50 (Max.)	2 ω diameter (at $1/e^2$ intensity) measured at beam waist, after beam focused from collimator.
Maximum Optical Power	mW	500	
Operating Temperature	°C	-5 ~ 70	
Storage Temperature	°C	-40 ~ 85	
Dimension (ϕ -D x A)	mm	$\phi 3.20 \times 9$ (with metal tube) $\phi 2.78 \times 9$ (with glass tube) $\phi 1.65 \times 6$ (with glass tube) $\phi 1.38 \times 8$ (with glass tube)	Customizable
Lens Chip (size B)	mm	0~1	Customizable
Pigtail Chip (size C)	mm	0~1	Customizable

*. All the specifications are based on the devices without connectors, and guaranteed over wavelength, polarization and temperature.

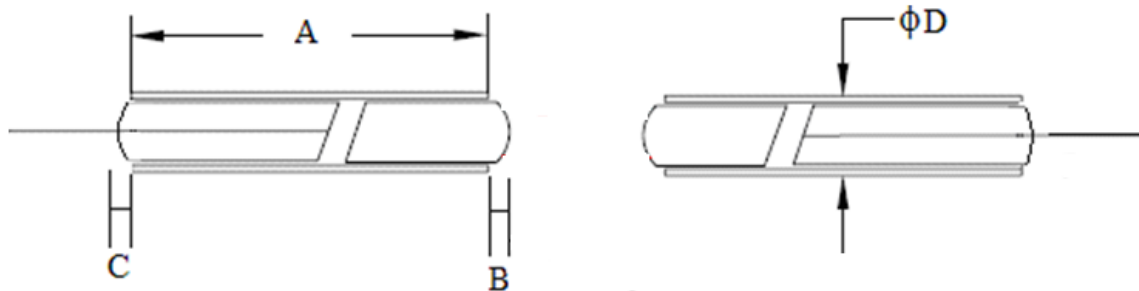
** . IL is 0.3 dB higher, RL is 5 dB lower, and ER is 2 dB lower for each connector added. Connector key is aligned to slow axis.

*** . Specifications are subject to change without notice.

Slow Axis Orientation and Mark



Dimensions



Ordering Information (Example: PMCC1-24C11120)

PMCC 1 —

<p>Central Wavelength</p> <p>1. 1310 nm</p> <p>2. 1550 nm</p> <p>3. Others</p> <hr/> <p>Dimension</p> <p>1. Φ 3.20 x 9 mm</p> <p>2. Φ 2.78 x 9 mm</p> <p>3. Φ 1.65 x 6 mm</p> <p>4. Φ 1.38 x 8 mm</p> <p>5. Others</p>	<p>Lens Type</p> <p>C. C-lens</p> <p>G. G-lens</p> <hr/> <p>Working Distance</p> <p>1. Standard</p> <p>2. Others</p>	<p>Fiber Type</p> <p>1. Panda PM fiber</p> <p>2. Others</p> <hr/> <p>Fiber Tuber</p> <p>1. 250μm fiber</p> <p>2. 900μm fiber</p> <p>3. Others</p>	<p>Fiber Length</p> <p>1. 1.5 +/- 0.1 m</p> <p>2. 1.8 +/- 0.1 m</p> <p>3. 3.3 +/- 0.1 m</p> <p>4. Others</p> <hr/> <p>Connector Type</p> <p>0. No Connector</p> <p>1. FC/UPC</p> <p>2. FC/APC</p> <p>3. SC/UPC</p> <p>4. SC/APC</p> <p>5. LC/PC</p> <p>6. MU/PC</p> <p>7. Others</p>
--	--	---	--

All statements, technical information and recommendations related to the products herein are based upon information believed to be reliable or accurate. However, the accuracy or completeness thereof is not guaranteed, and no responsibility is assumed for any inaccuracies. The user assumes all risks and liability whatsoever in connection with the use of a product or its application. Primanex reserves the right to change at any time without notices the design, specifications, function, fit or form of its products described herein, including withdrawal at any time of a product offered for sale herein. Primanex makes no representations that the products herein are free from any intellectual property claims of others. Please contact Primanex for more information. Primanex and the Primanex logo are trademarks of Primanex Corporation. Other trademarks are the property of their respective holders.